

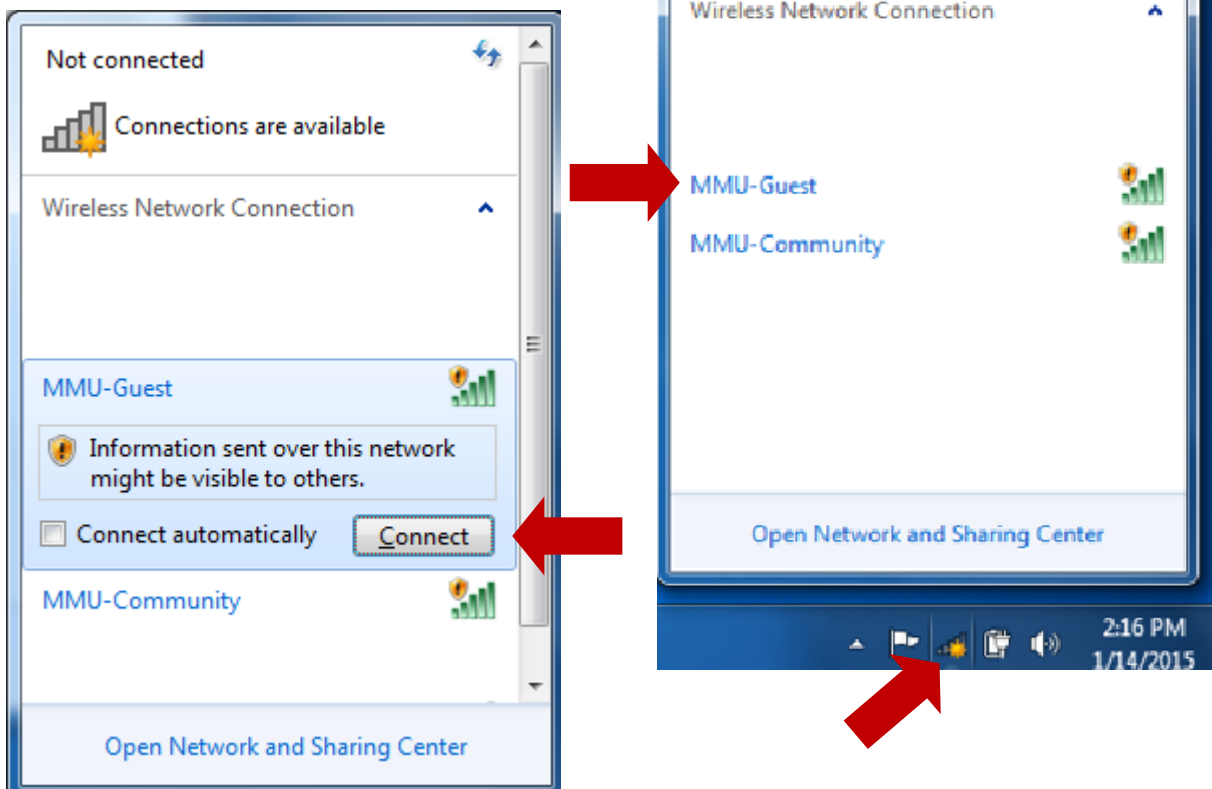
## Instructions for Accessing Guest Wireless on Windows 7

1

Click on the wireless icon in the notification area of the taskbar on your computer (in the bottom right corner of the screen, indicated by red arrow). This will bring up the list of available wireless networks.

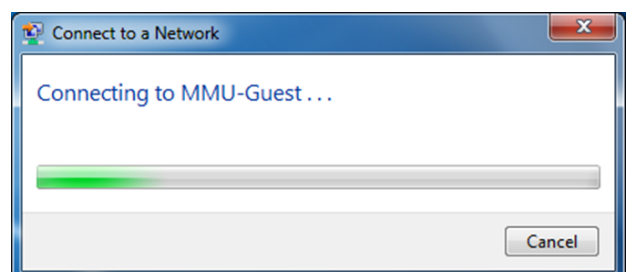
2

Click on **MMU-Guest**, then click on the **Connect** button.



3

Your computer will establish a connection to MMU-Guest.

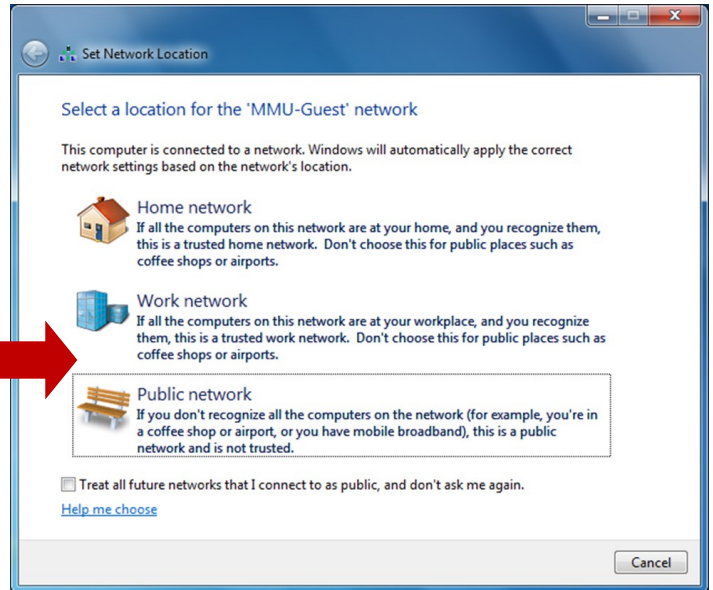
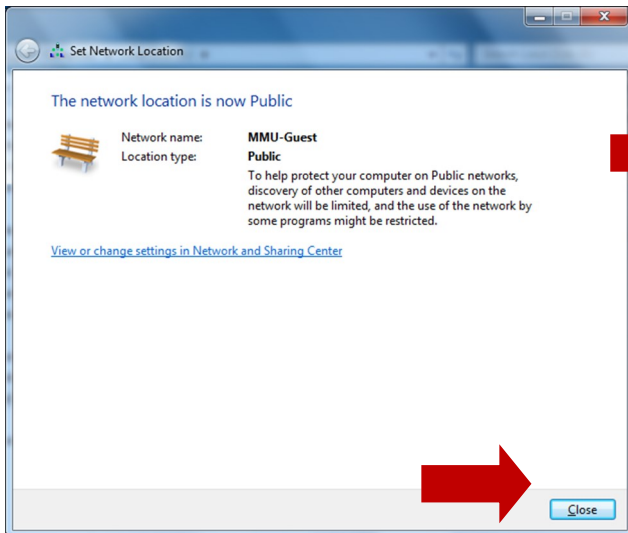


4

Once a connection has been established, you will be asked to select what type of network that you are connecting to. Click on **Public Network**.

5

Click the **Close** button to close the network connection location box



6

The WiFi icon in your notification area should now display an indicator (exclamation point in a yellow triangle) that additional actions are required.



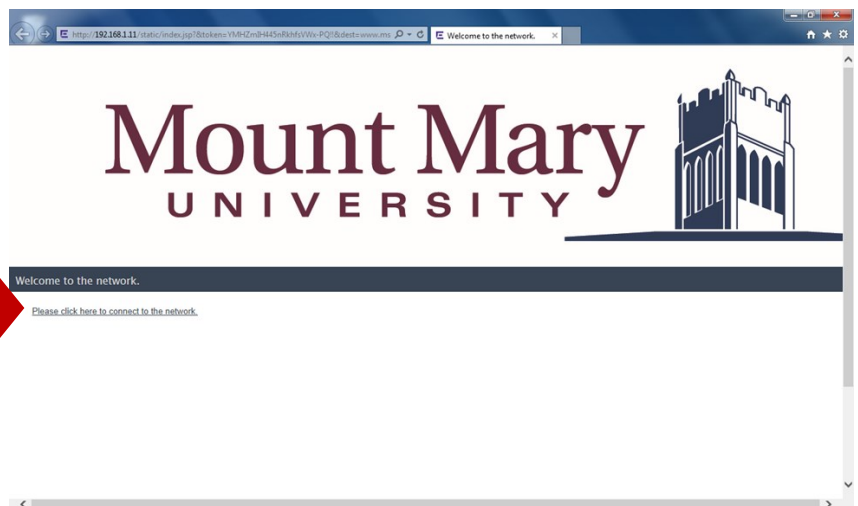
7

Open a browser of your choice and navigate to a website (e.g. www.mtmary.edu)

Note: You must try opening a non-secure web site; e.g. a site that begins with http:// and not https://

This will re-direct you to a page indicating that you must register to use MMU-Guest.

Select the "Please click here to connect to the network" link.



8

Fill in your first name, last name, mobile phone number and mobile phone provider in the registration form. Once all fields have been filled in, select the **Complete Registration** button.

Note: If your mobile phone provider is not in the list of carriers, you will unfortunately be unable to log into MMU-Guest.

A screenshot of a web browser displaying the Mount Mary University Enterprise Registration form. The browser address bar shows the URL <http://192.168.1.11/main?sessionid=80A1DC7028518E54A3EC7B0AE16C485>. The page features the Mount Mary University logo and a castle illustration. Below the logo, a dark blue banner reads "Welcome to the Enterprise Registration Center". The main content area contains the following text: "You have been **denied** network access because this device is not registered to the network. To obtain network access, you **must** complete registration using the form below. By registering to the network, you are **agreeing** to the terms and conditions explained in the [Enterprise Network and Computer Acceptable-Use Policy](#). You will be **required** to enter in a verification code that will be sent to your specified contact information (Standard text messaging rates may apply)." The registration form includes the following fields: "First Name" (John), "Last Name" (Doe), "Phone Number" (414-258-4810), and "Mobile Service Provider" (AT&T). A "Complete Registration" button is located below the form. A small note at the bottom of the form area says "Please press the Complete Registration button only once."

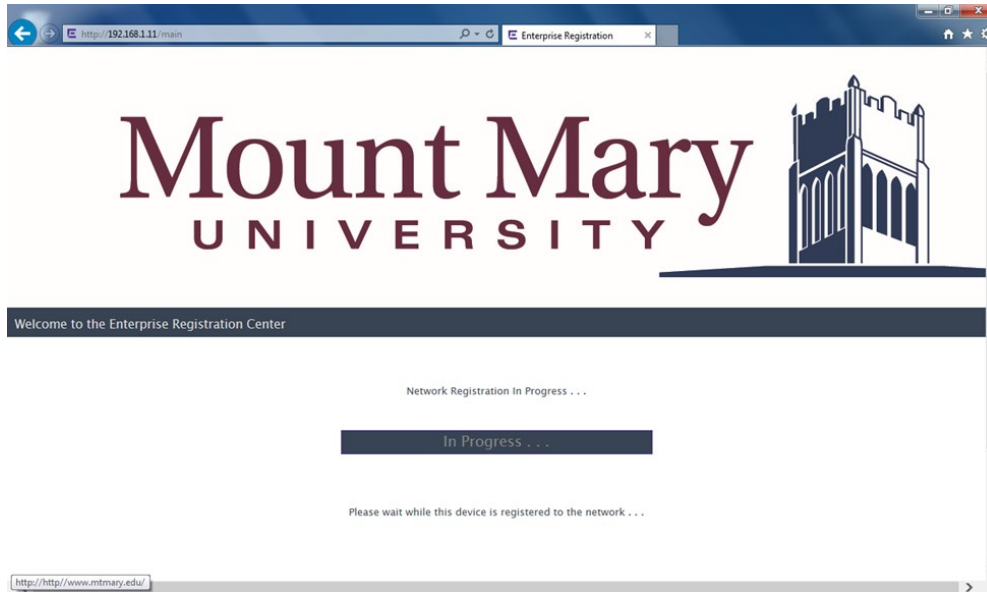
9

Your verification code will be sent to your mobile phone via a text message. Enter this verification code and select the **Complete Registration** button.

A screenshot of the same web browser displaying the Mount Mary University Enterprise Registration form. The browser address bar shows the URL <http://192.168.1.11/main>. The page features the Mount Mary University logo and a castle illustration. Below the logo, a dark blue banner reads "Welcome to the Enterprise Registration Center". The main content area contains the following text: "Please check your email or phone and enter in the verification code that was sent to 4142584810." Below this text is a "Verification Code:" input field. A red arrow points to this input field. Below the input field are two buttons: "Complete Registration" and "Cancel". A small note at the bottom of the form area says "Please press the Complete Registration button only once."

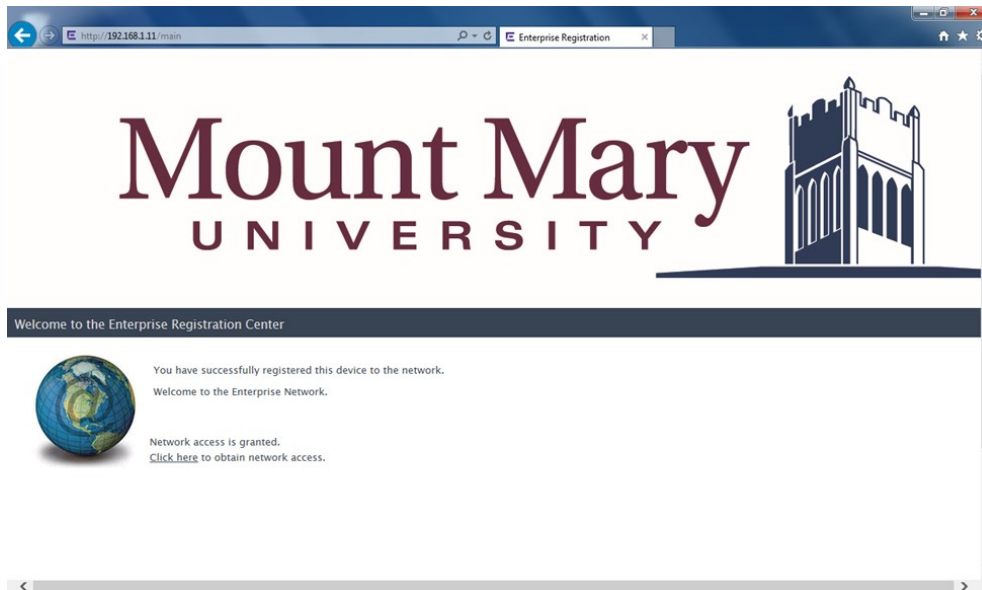
10

After entering your verification code, the network registration process will start; this will take about 10 to 15 seconds to complete.



11

After the verification process has completed, you will see the following page. At this point, the page originally requested will load, or you can continue to browse to any web site.



If you experience any difficulty connecting to MMU-Guest, please contact the IT Services Help Desk at extension 321.